

## wrx-sm Robot mower spikes

# Assembly instructions

The spikes are compatible with the following products from WORX ([eu.worx.com](http://eu.worx.com)):  
**S300 (WR130E)** and **M500 (WR141E)**.

With the robotic mower spikes, you can finally give your WORX brand robotic lawn mower the upgrade it needs.

The **3idee wrx-sm spikes** provide a significant traction improvement of your WORX robotic lawnmower and additionally provide sufficient lawn aeration while mowing.

Please note for all M models, the additional **steps 4.1 - 4.5** | **(M models only)**



# ATTENTION

**The spikes are stainless steel parts, which can be sharp-edged and dangerous. All parts are deburred by us, nevertheless caution is required during assembly. Dangerous cut injuries can occur!**

**Please keep the components away from children.**



## Scope of delivery

### 4x spikes (stainless steel)

(Figure a)

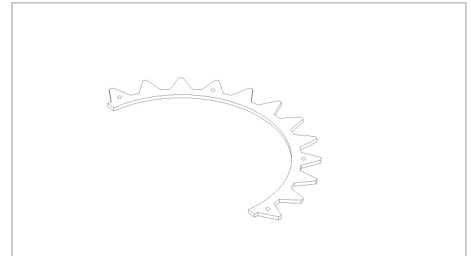


Figure a

### 4x holder (plastic)

(Figure b)

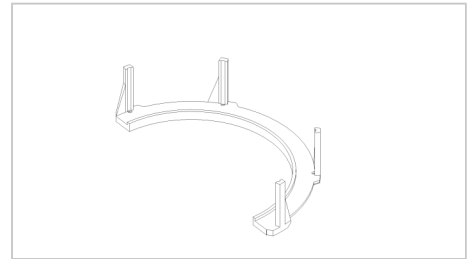


Figure b

### 16x M3x50 pan-head screw (stainless steel)

**16x M3 nut self-locking (pre-assembled by 3idee)**

(Figure c)

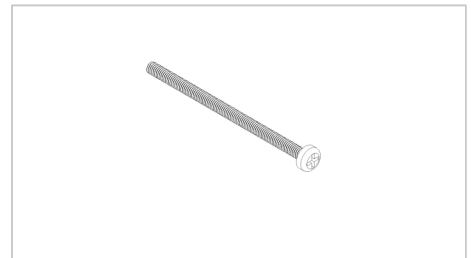


Figure c

### 16x washer for M3 (stainless steel)

(Figure d)

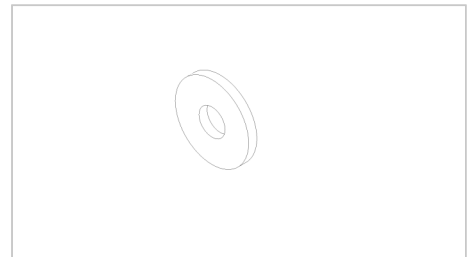


Figure d

## 1x Distance angle M (plastic)

(Figure e)

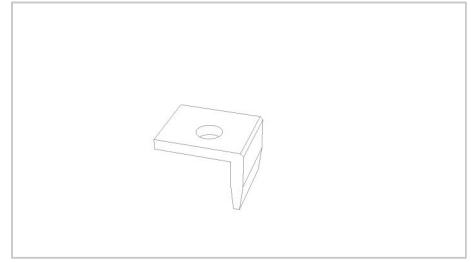


Figure e

# Assembly instruction

## Step 1

**We recommend that you place your WORX robotic lawnmower on your lawn for installation so as not to damage any surface.**

Remove the hub cap from the wheels. We recommend a flat screwdriver for this step. (Figure 1)

**Important:** Place the screwdriver on the 3 points marked with the arrow on the hubcap. There are notches on the back of the hubcap that make it easier to remove.

Repeat this step for the second wheel.

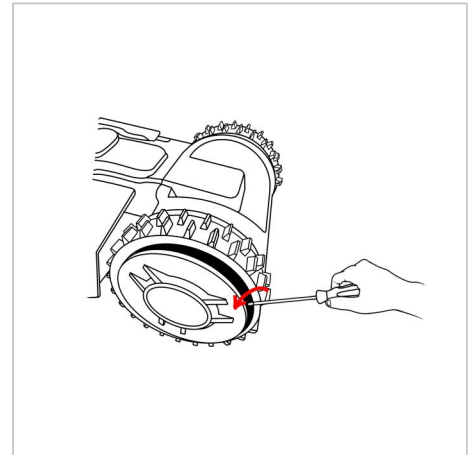


Figure 1

## Step 2

**2a: Loosen** the hex nut by turning it to the left to remove the wheel. Use a **16mm box wrench** to do this.

**2b:** Remove the nut.

**2c:** Remove the large black washer as well.

**2d:** Now pull the wheel off the thread.

(Figure 2)

Repeat this step for the second wheel.

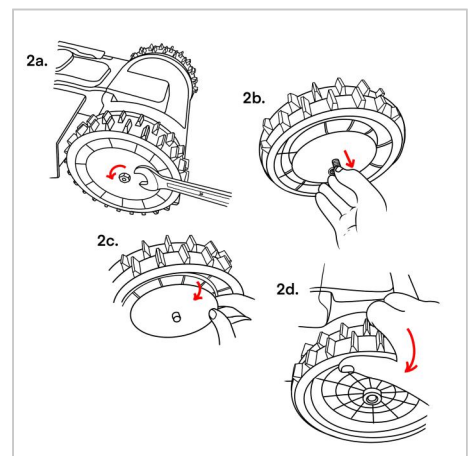


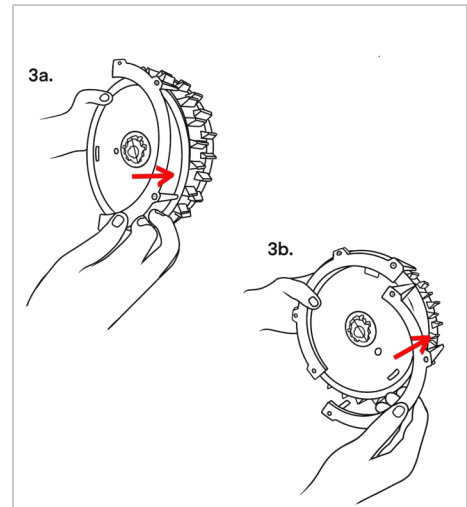
Figure 2

### Step 3

**3a:** Put the plastic holder between the tire tread on the wheel. Make sure you find the right position.

**3b:** Correctly mounted, the two holders should form a circle.

Repeat this step for the second wheel.



### Step 4

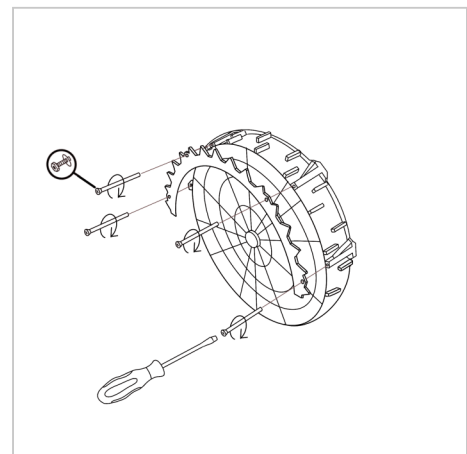
Turn the wheel so that the front is facing you again. Now place the stainless steel spikes on the wheel and make sure that all holes match the rear holder. This is important because the holes are not the same distance from each other.

Take **4x the supplied screws (M3x50) + washer** and put them through the stainless steel spikes, as well as the holes of the bracket to connect them to the bracket.

**Important: Make sure** that each screw has a washer.

You can then add the stainless steel spikes to the other half of the wheel.

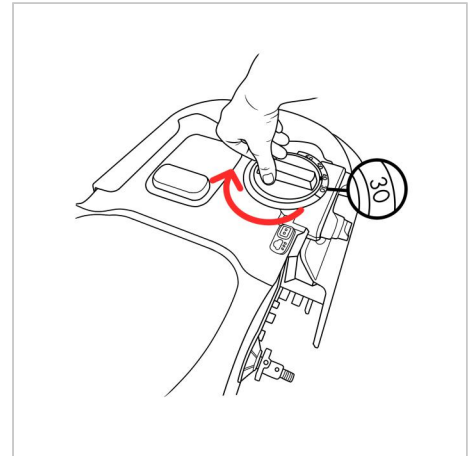
Repeat this step for the second wheel.



## Step 4.1 (M models only)

**This step is only for the following models:** M500 (WR141E), M500 Plus (WR165E), M700 (WR142E), M700 Plus (WR167E), M800i (WG757E), M800i (WR111 MI), M900 (WG758E), M1000i (WG796E.1), M1200i (WG799E).

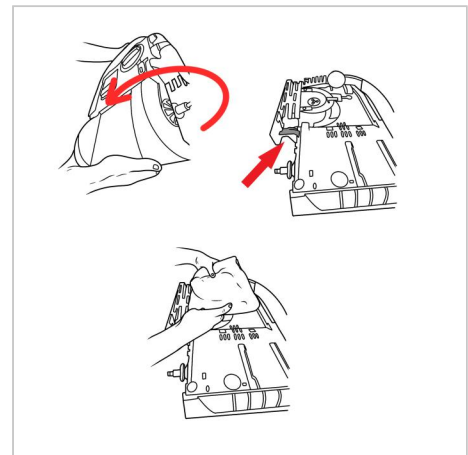
Turn the height of the mower to **level 30**.



## Step 4.2 (M models only)

**This step is only for the following models:** M500 (WR141E), M500 Plus (WR165E), M700 (WR142E), M700 Plus (WR167E), M800i (WG757E), M800i (WR111 MI), M900 (WG758E), M1000i (WG796E.1), M1200i (WG799E).

- a) Now turn your WORX 180° so that it is upside down.
- b) There is the black rubber part which should be dismantled.
- c) For safety, please put a towel on the blades of the mower to minimize the risk of injury.

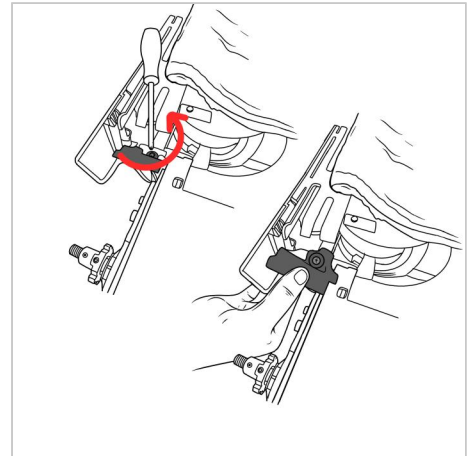


### Step 4.3 (M models only)

**This step is only for the following models:**

M500 (WR141E), M500 Plus (WR165E), M700 (WR142E),  
M700 Plus (WR167E), M800i (WG757E), M800i (WR111 MI),  
M900 (WG758E), M1000i (WG796E.1), M1200i (WG799E).

- a) Now take a Phillips screwdriver and loosen the screw that fixes the black rubber part.
- b) Now you can remove the black rubber part.

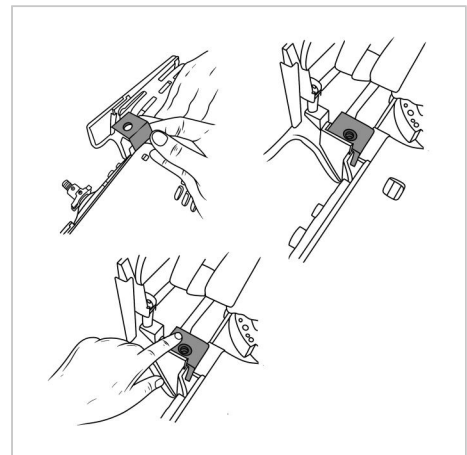


### Step 4.4 (M models only)

**This step is only for the following models:**

M500 (WR141E), M500 Plus (WR165E), M700 (WR142E),  
M700 Plus (WR167E), M800i (WG757E), M800i (WR111 MI),  
M900 (WG758E), M1000i (WG796E.1), M1200i (WG799E).

- a) Use the **distance bracket M (plastic)** supplied by us.
- b) Put it in the position where the black rubber part was before, as shown in the picture.
- c) Please check if the hole of the spacer **M (plastic)** is properly seated.



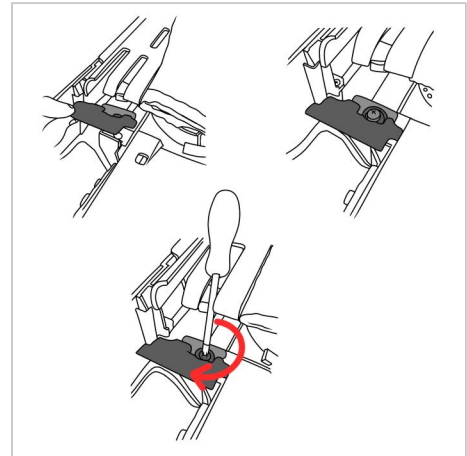


## Step 4.5 (M models only)

**This step is only for the following models:**

M500 (WR141E), M500 Plus (WR165E), M700 (WR142E),  
M700 Plus (WR167E), M800i (WG757E), M800i (WR111 MI),  
M900 (WG758E), M1000i (WG796E.1), M1200i (WG799E).

- a) Put the black rubber part back to the original position, which is on the **distance bracket M (plastic)**.
- b) Attach parts by screwing the original screw back through from the top.
- c) Please check if the screw is fixed correctly.



## Step 5

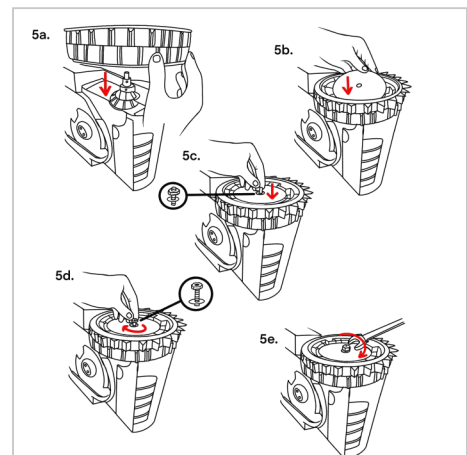
**5a:** Align the wheel so that the stainless steel spikes face outward. After you put the wheel back on the thread, turn it until it clicks into place.

**5b:** Put the large black steel disk back on the wheel.

**5c:** Take the small black lock washer first and then the nut to reconnect the wheel to the WORX.

**5d:** Hand tighten the nut slightly.

**5e:** Now we use the **16mm combination wrench** to properly secure the wheel. It is best to perform this step while your WORX robotic lawnmower is on your lawn so as not to damage any surfaces. To prevent the wheel from turning while tightening, lightly tap the wrench with your hand.



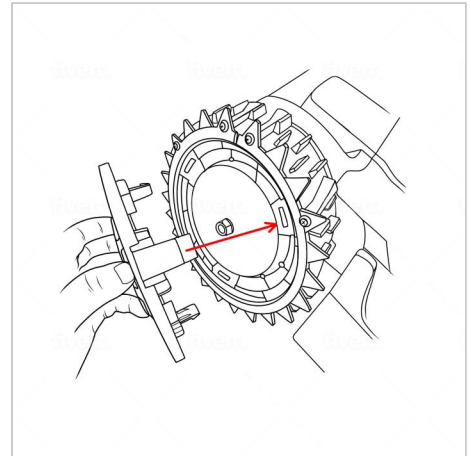
Repeat this step for the second wheel.

## Step 6

Once both wheels are mounted, put the hubcaps back on the wheel.

Note that the tabs on the hubcap must be inserted into the recesses in the wheel.

Repeat this step for the second wheel.



# Safety instructions

## General notes

- Dimensions stainless steel spikes:  
**Outer diameter: 215mm**  
**Inner diameter: 170mm**  
**Thickness: 3mm**
- Make sure all screws are tight and the stainless steel spikes are firmly attached to the wheel.
- The material of the holder (PLA plastic) is conditionally heat resistant. (45-55°C)
- PLA is a UV resistant material. (Holder)
- The surface of the black plastic holders may wear over time and show appearances of wear. This is normal and only occurs more initially, but does not affect the performance of the product.
- The spikes and screws are made of stainless steel (V2A) and are therefore resistant to corrosion and weathering.

## Material notes

### Spikes:

Stainless steel (V2A) is a corrosion-resistant and weatherproof material. Nevertheless, corrosion (rust) can occur with the contact of, for example, metal chips.

### Holder (plastic):

The adapter is made of high-quality polylactide (**PLA**) plastic. PLA is both a colorfast and UV-resistant material and has low flammability. Polylactide has a temperature resistance (glass transition temperature) of approx. **45°C-55°C** and is therefore not suitable for use in the vicinity of direct / extreme heat and heat sources.

We wish you a lot of fun with your product.

Your 3idee Team